

For Lease

1,693 - 5,236 Sq Ft Available
Single Level Office Building

10550 Wayzata Blvd, Minnetonka, MN 55305



Jordan Greenberg
Andrew Ward
952-746-9600

SpaceNet Equities
"Commercial Real Estate Solutions"

www.spaceneteq.com

8100 Wayzata Blvd. • Minneapolis, MN 55426

Building Information and Site Map

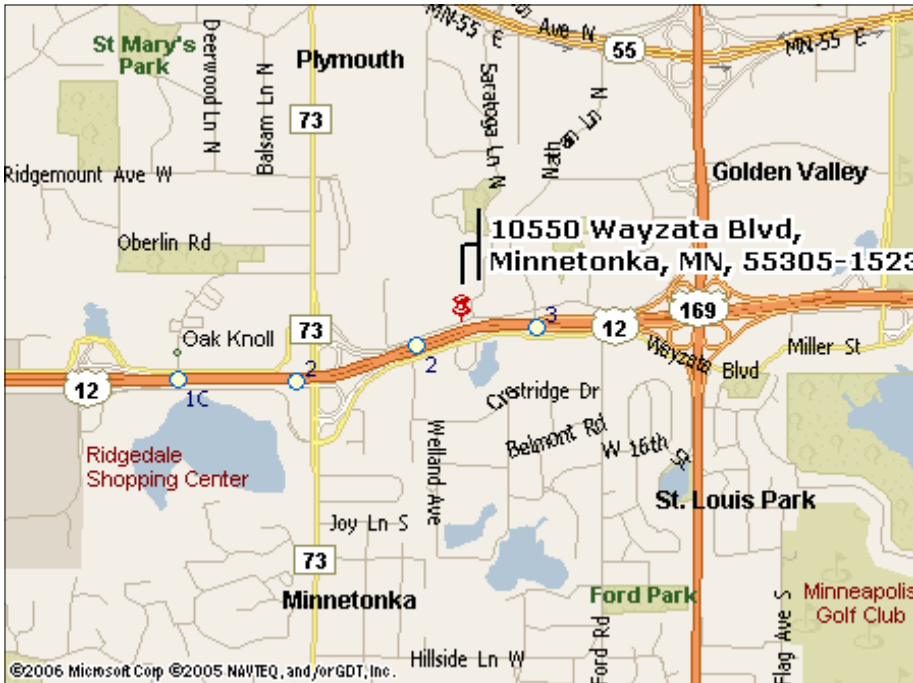
TOTAL BUILDING SF:	10,425	HVAC:	Gas Forced Air
Suite 2 Office Sq Ft:	2,866	Lighting:	Florescent & Parabolic Throughout
Suite 3 Office Sq Ft:	2,370	Parking:	47 designated stalls plus shared parking within Woodside Office Park
Total Square Feet Available:	5,236	Bathrooms:	Multiple throughout building
Year Built:	1986	Entrances:	Separate entrances for each suite
Construction:	Steel Frame with Cedar Exterior		



COMMENTS: This 10,425 sf office building is located in a prime Minnetonka location with immediate accessibility and visibility to I-394. Situated in the Woodside Office Park, near retail & bus lines. Several floor plan options, light & bright with vaulted ceilings, skylights & plenty of windows.

- * Close to restaurants, retail, bus line & lodging
- * T1 Line accessible within the building
- * Good parking, well lit safe area
- * Easy highway access to 394 through Hopkins Crossroad (73)

Lease Rate: \$12.50 Net Per Sq Ft **Taxes:** \$3.70 Per Sq Ft **Operating Expenses:** \$3.80 Per Sq Ft



SpaceNet Equities
"Commercial Real Estate Solutions"

For Leasing & Sales Information:
Jordan Greenberg 952-746-9600
(jordan@spaceneteq.com)

Andrew Ward 952-746-9635
(andrew@spaceneteq.com)

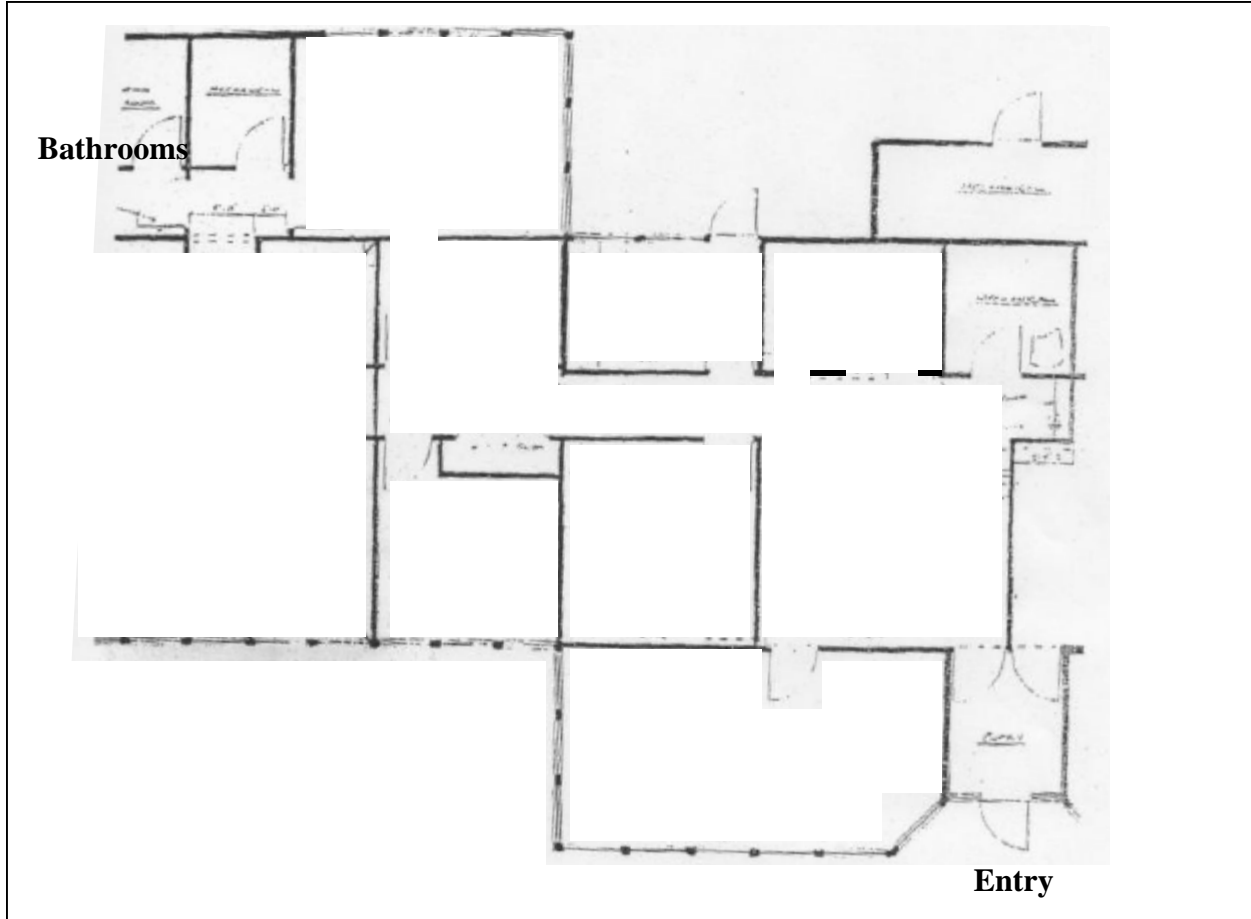
www.spaceneteq.com

This brochure has been compiled based on the best available information. We do not guarantee the reliability and accuracy of this information. All lessees and buyers should validate such information to ensure its accuracy.

Suite # 1 - 1,693 SQ.FT.

10550 Wayzata Blvd. Minnetonka, MN 55305

North

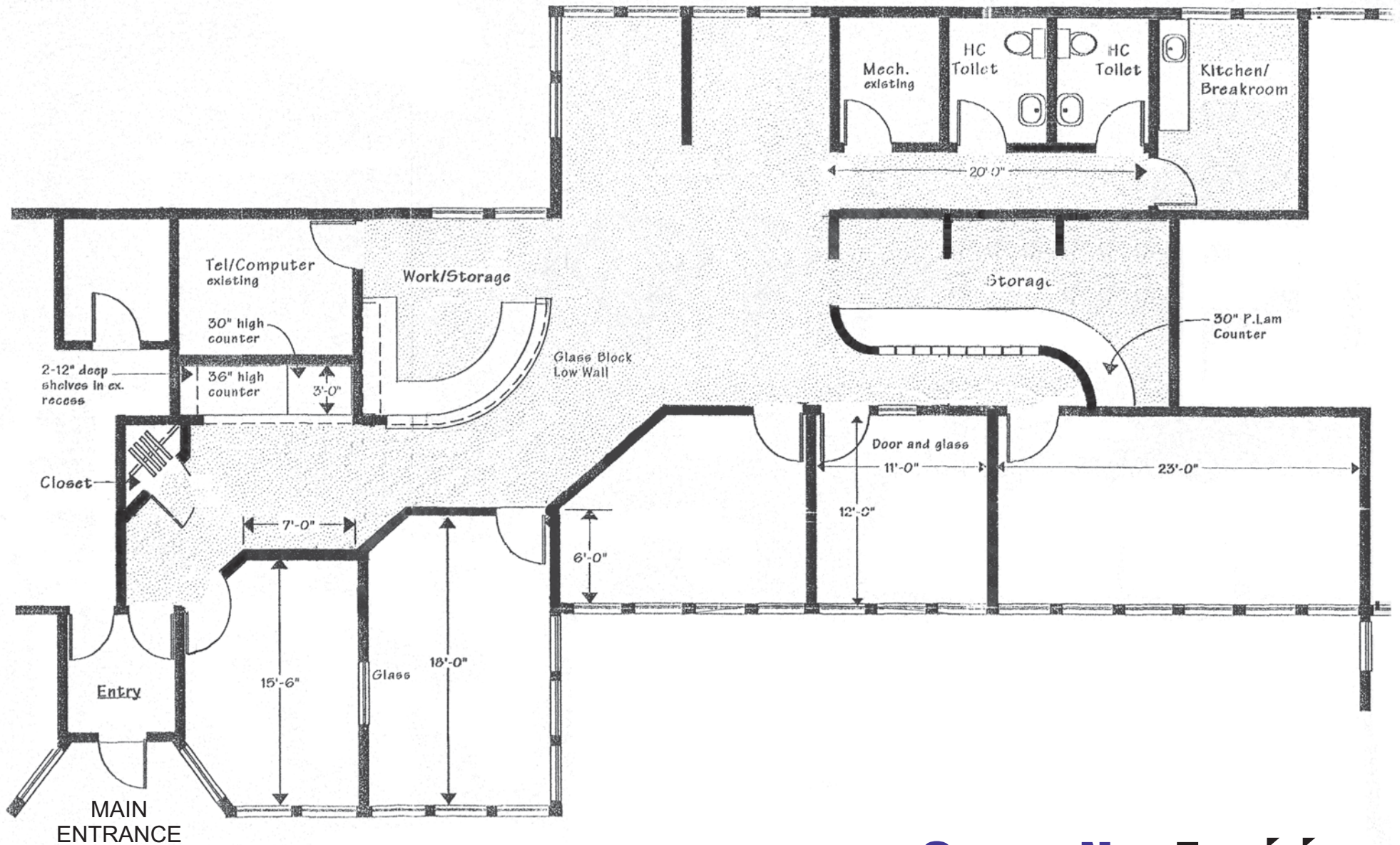


SpaceNet Equities
"Commercial Real Estate Solutions"

This brochure has been compiled based on the best available information. We do not guarantee the reliability and accuracy of this information. All lessees and buyers should validate such information to ensure its accuracy.

SUITE 'C' • 2,866 SQ. FT.

10550 Wayzata Blvd. • Minnetonka, MN 55305

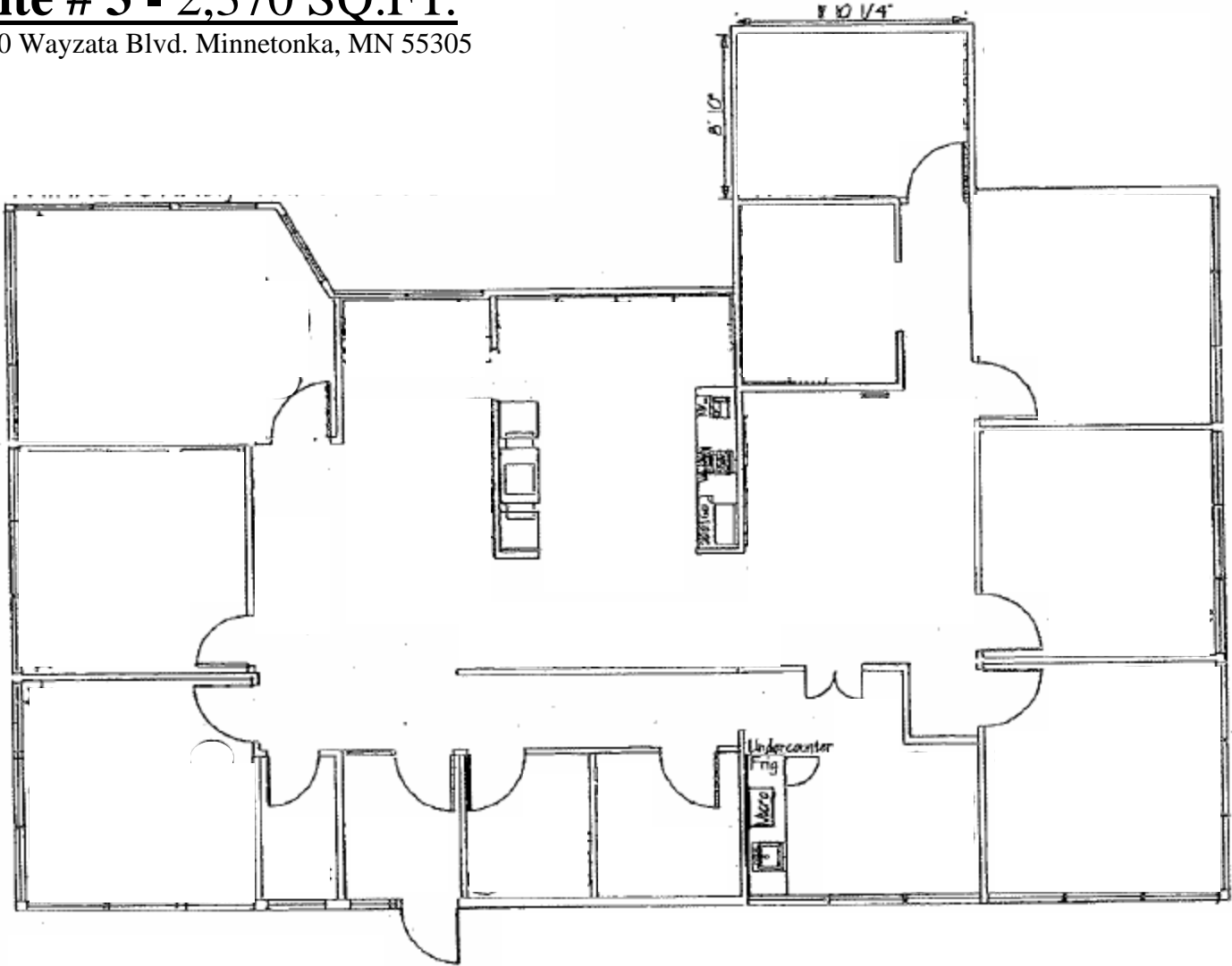


SpaceNet Equities

"Commercial Real Estate Solutions"

Suite # 3 - 2,370 SQ.FT.

10550 Wayzata Blvd. Minnetonka, MN 55305



SpaceNet Equities
"Commercial Real Estate Solutions"

This brochure has been compiled based on the best available information. We do not guarantee the reliability and accuracy of this information. All lessees and buyers should validate such information to ensure its accuracy.

Building Aerial



SpaceNet Equities

"Commercial Real Estate Solutions"

This brochure has been compiled based on the best available information. We do not guarantee the reliability and accuracy of this information. All lessees and buyers should validate such information to ensure its accuracy.